

**RODENHOUSE**



**Fastening Systems**



**GRIP-LOK®**  
**MW** PLATE

## Mineral Wool Attachment

## Any Substrate



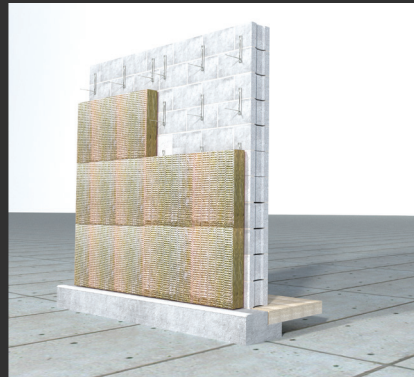
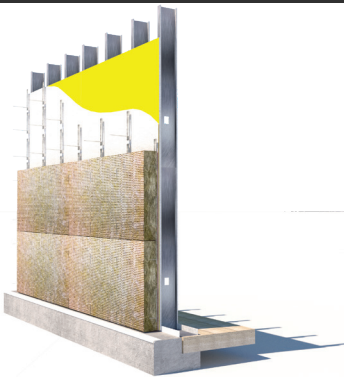
\*Bend the barb flush against the surface of the mineral wool surface once impaled.

### GRIP-LOK® MW Plate

The Grip-Lok® MW Plate is a versatile mineral wool attachment solution, securing mineral wool to any substrate including wood, metal, or concrete. Shoot in, screw in, or nail in with appropriate fastener and tool. Secures mineral wool thicknesses up to 5".

For enhanced WRB / air barrier performance, use available Grip-Deck® Gasket Screws. Gasket extends through the plate and compresses against the WRB / sheathing, helping to self-seal the screw penetration.

\*Patented and/or Patent Pending



(616) 454-3100



[www.rodenhouse-inc.com](http://www.rodenhouse-inc.com)

# GRIP-LOK<sup>®</sup> MW PLATE



- Secures up to 5" mineral wool
- Shoot it, screw it, or nail it
- All substrates including wood, metal, and masonry
- Mill galvanized to prevent corrosion
- Unlike adhesive stick pins, provides permanent attachment
- Curled sides provide rigidity and prevent sharp edges



\*Bend the barb flush against the surface of the mineral wool surface once impaled.



EPDM gasket on screw extends through the plate and compresses against the air barrier to help seal the screw penetration

