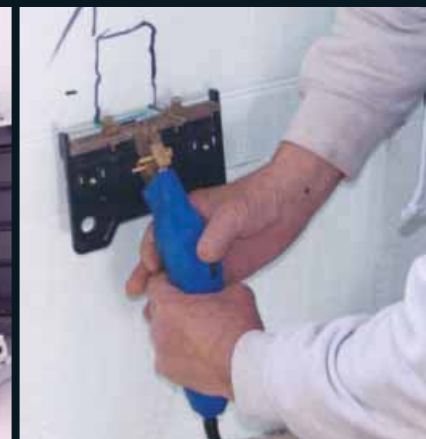


Electrical Boxes for ICF Buildings



INEXO[®]
THE ICF BOX

ELECTRICAL & TELECOMMUNICATIONS SYSTEMS

ELECTRICAL BOXES FOR INSULATED CONCRETE FORM BUILDINGS

- Single, Double and Triple Gang
- Commercial (AC or NMD Cable) and Residential (NMD Cable) Applications



We build tough products for tough environments[®]

THE ELECTRICAL BOX DESIGNED SPECIFICALLY FOR ICF CONSTRUCTION

THE SAME OLD PROBLEM



Until now there have been few choices when attempting to provide a truly professional electrical box solution for Insulated Concrete Form buildings. Traditional electrical boxes are tedious to install and often require a fair amount of ingenuity and additional labor to provide a less than ideal

finished product. Other boxes offered to ICF builders require installation before the concrete pour, throwing off your project time-line.

AN INNOVATIVE SOLUTION

INEXO's patented¹ design provides a truly professional solution that works with your production schedule and provides the quality installation and finished look that builders require and owners appreciate. INEXO® boxes link seamlessly with existing ICF materials, tools and methods. A complete offering designed for ICF walls allow builders to standardize on the use of electrical boxes throughout the building.

- ✓ INEXO electrical boxes are installed after the concrete pour allowing you to follow your traditional production schedule.
- ✓ INEXO boxes can be installed anywhere on the ICF wall allowing for more variety in box positioning as installers are no longer required to affix to the ICF ties or drill and secure to the concrete wall.
- ✓ INEXO ICF boxes are available in single, double and triple gang options for use in residential and commercial applications.
- ✓ INEXO boxes are fully certified to CSA standards for use in ICF and can resist pull forces exceeding 100 lbs – (twice the standard requirement)

¹ Patent No. 6,932,628 & Patent Pending

FAST AND EASY INSTALLATION

Installing INEXO boxes requires no special training making the transition to a new solution seamless.



STEP 1: Select the position for your box. Using a hot-knife or cutting tool, cut the opening in the EPS foam.



STEP 2: Insert the INEXO box into your opening and push the 'teeth' into place until you hear the 'click' – so you know your box is secure. If you are positioned next to a tie, you can utilize two of the 'teeth' on the non-tie side and use the flange holes on the opposite side to screw into the plastic tie.



STEP 3: Pull through your NMD cable and continue

INNOVATIVE DESIGN FOR A PROFESSIONAL INSTALLATION

Single gang box provides 19 cubic inch capacity

INEXO provides a 1/2" drywall setback resulting in a professional finish.

With an insertion depth of 2-1/4" and a smooth back, the INEXO box is designed specifically for ICF.



Greater installation versatility with 3 screw hole choices and flanges on both sides.

Laser level guides for the most precise box placement

'TEETH' can be easily removed and replaced and provide an audible 'click' when fully engaged and secured to the EPS foam.

'TEETH' lock in place for a rigid hold that won't loosen.

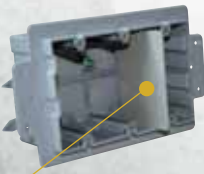


Full flange prevents box from twisting and sinking into foam if over-tightened. This innovation allows installers to provide a professional straight finish with no lop-sided boxes.

Residential box designed for NMD cable (14/2 – 10/3).



Commercial box designed for armoured cable (AC) or NMD cable.



The new INEXO ICF box divider provides contractors with a quick and convenient way to separate different voltage sources in the same box.

Description	Part Number	Product Code
-------------	-------------	--------------

Residential (NMD Cable 14/2 – 10/3)



Single Gang	W-ICF1RL	N/A
Double Gang	W-ICF2RL	N/A
Triple Gang	W-ICF3RL	N/A

Commercial (AC or NMD Cable)



Single Gang	W-ICF1CLU	N/A
Double Gang	W-ICF2CLU	N/A
Triple Gang	W-ICF3CLU	N/A

new

Description	Part Number	Product Code
-------------	-------------	--------------

Low Voltage Divider (Not Available From Wind-lock)



Divider	N/A	N/A
---------	-----	-----

1.563 [39.69]

As leading suppliers of thermoplastic piping systems, the IPEX Group of Companies provides our customers with some of the largest and most comprehensive product lines. All IPEX products are backed by more than 50 years of experience. With state-of-the-art manufacturing facilities and distribution centers across North America, we have earned a reputation for product innovation, quality, end-user focus and performance.

Markets served by IPEX group products are:

- Electrical systems
- Telecommunications and utility piping systems
- Industrial process piping systems
- Municipal pressure and gravity piping systems
- Plumbing and mechanical piping systems
- Electrofusion systems for gas and water
- Industrial, plumbing and electrical cements
- Irrigation systems
- PVC, CPVC, PP, PVDF, PE, ABS, and PEX pipe and fittings

Product is manufactured by IPEX Electrical Inc.

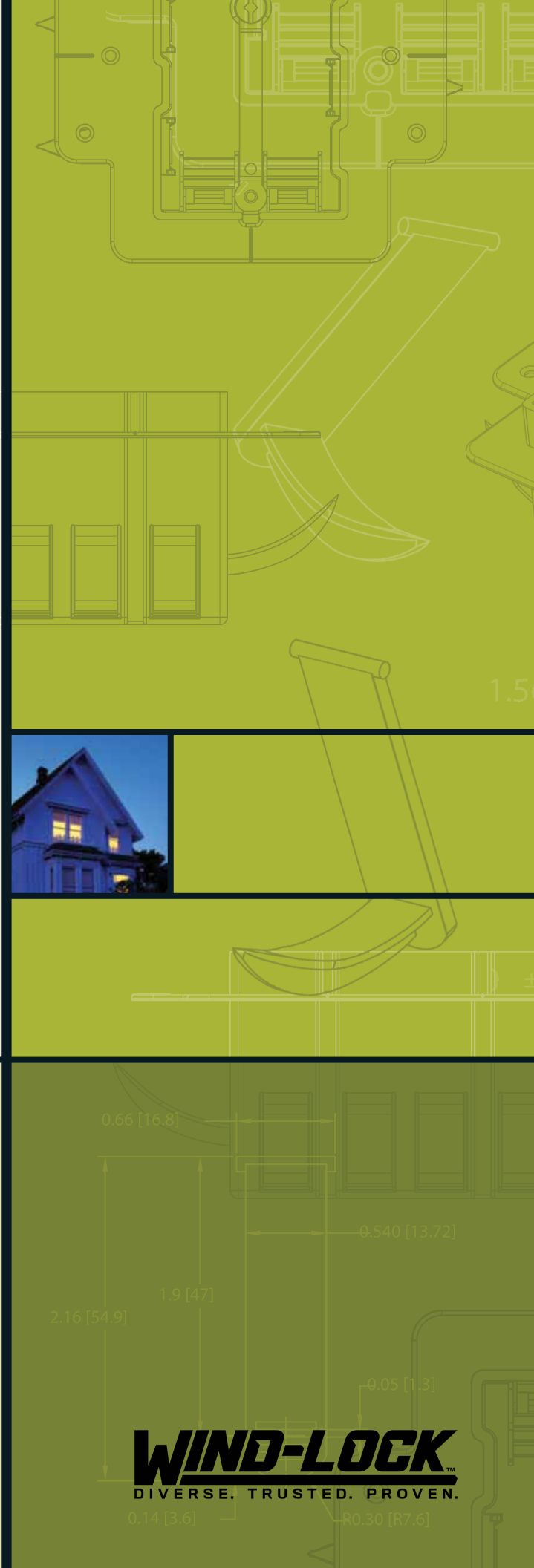
INEXO® is a registered trademark of IPEX Branding Inc.

This literature is published in good faith and is believed to be reliable. However it does not represent and/or warrant in any manner the information and suggestions contained in this brochure. Data presented is the result of laboratory tests and field experience.

A policy of ongoing product improvement is maintained. This may result in modifications of features and/or specifications without notice.



BRELIXIP161202C © 2016 IPEX EL0210C



WIND-LOCK™
DIVERSE. TRUSTED. PROVEN.

0.14 [3.6]

R0.30 [R7.6]